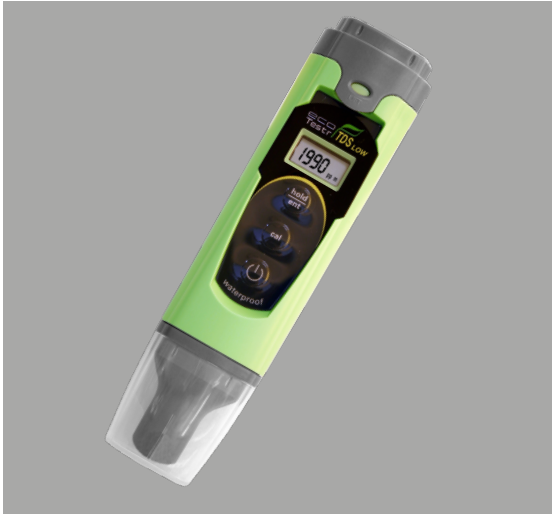


Electronic TDS meter for measuring Total Dissolved Solids in heating system water



- Rapidly demonstrates the cleanliness of heating system water after a power flush by enabling water from the cleaned system to be compared with mains water.
- Waterproof, dustproof, and rugged for use in damp conditions.
- Battery life, ready and calibration indicators.
- Auto 'power off' prolongs battery life.
- Stainless steel electrodes for resistance and durability.
- Push button calibration.

Taking a reading with the electronic TDS meter

1. Take a sample of at least 100ml of the water to be tested in a suitable clean beaker / vessel, to a depth of approx. 5cm.
2. Remove protective cap from the TDS meter.
3. Turn the TDS meter on by depressing the ON/OFF button located on the front of the meter.
4. Immerse the TDS meter into the sample of water, without touching the bottom of the sample container.
5. Stir gently and wait for the display reading to stabilise. The TDS meter automatically compensates for temperature variations, and variations on the meter display can be due to the temperature sensor adjusting to the sample temperature.
6. Read the figure from the display, which is in parts per million of total dissolved solids (= mg/ litre).

To hold the display for easier reading, press 'HOLD' key. Press 'HOLD' key again to release.

Electronic TDS meter technical specifications	
TDS range	0 to 1990 ppm
Resolution	10 ppm
Accuracy	+/- 1% full scale
LCD display	3 digit single line
No. of calibration points	1
Calibration method	Digital push button
Operating temperature	0 to 50°C
Special functions	Self diagnostic; Hold; Auto power off 8.5 minutes after last key press
Power requirements	4 x 1.5V button cell batteries; > 100 hours.
Dimensions (cm)	16.3 x 4.5 x 3
Weight (gm)	90

Kamco Support
technical expertise; help-line and
spares service.

**BUILT IN
BRITAIN** 

benchmark
COLLECTIVE MARK
THE MARK OF QUALITY FOR THE INSTALLATION, COMMISSIONING
AND SERVICING OF DOMESTIC HEATING AND HOT WATER SYSTEMS

Kamco
BUILDING PUMPS
SINCE 1992

TEL: 01727 875020 | WWW.KAMCO.CO.UK | INFO@KAMCO.CO.UK
Kamco, Unit 9, Curo Park, Frogmore, St Albans, Herts, AL2 2DD, UK
KAMCO and CLEARFLOW are registered trademarks of Kamco Limited.